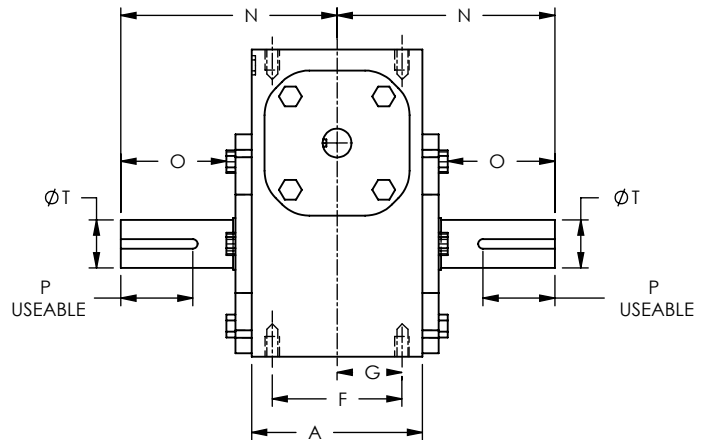
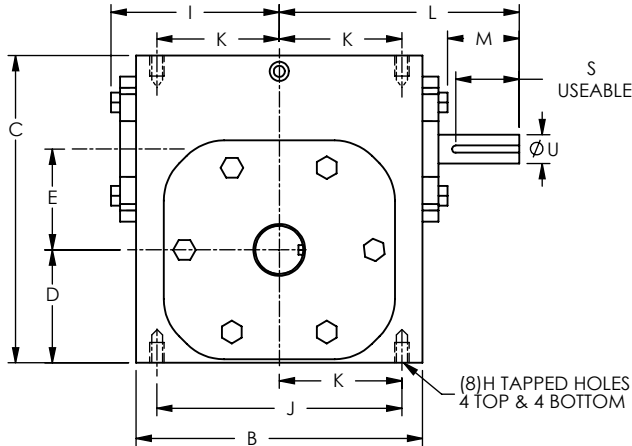
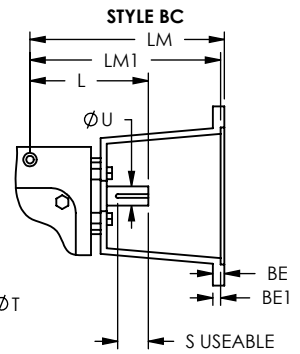
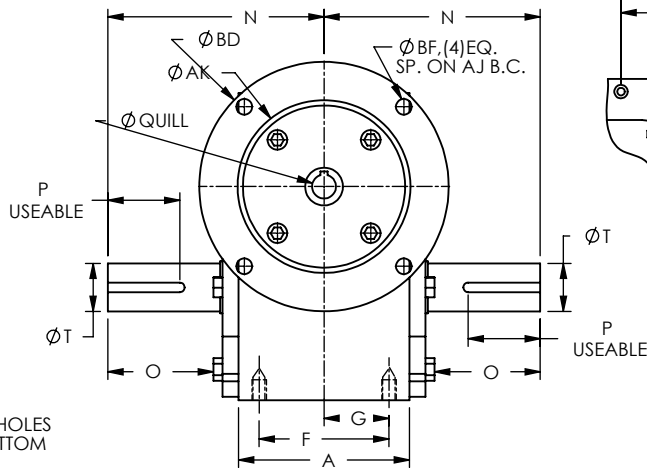
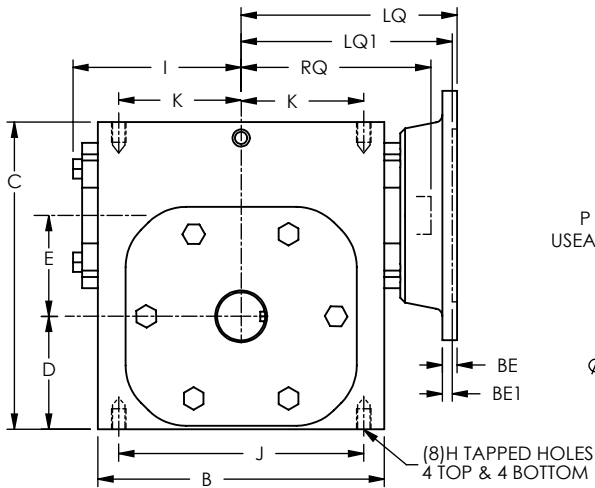


STYLE BR/BQ/BC 2000RA RIGHT ANGLE REDUCER

BR STYLE SOLID SHAFT OUTPUT



BQ STYLE SOLID SHAFT OUTPUT



UNIT	A	B	C	D	E	F	G	H	H ∇	I	J	K	L	M	N	O	P ¹
2133	2.88	4.00	4.66	1.72	1.333	2.00	1.00	5/16-18	0.53	2.13	3.25	1.63	3.88	1.32	4.00	1.97	3/16 x 1.50
2154	3.50	5.00	5.38	1.91	1.540	2.75	1.38	5/16-18	0.63	3.25	4.19	2.09	4.50	1.25	4.31	1.90	3/16 x 1.50
2175	3.66	5.38	5.75	2.06	1.750	2.75	1.38	5/16-18	0.63	3.33	4.19	2.09	4.75	1.42	4.33	1.83	3/16 x 1.38
2206	3.90	6.12	6.38	2.28	2.063	3.00	1.50	5/16-18	0.63	3.72	4.75	2.38	5.13	1.42	4.69	2.12	1/4 x 1.44
2238	4.06	6.34	6.94	2.50	2.375	2.88	1.44	3/8-16	0.56	3.82	5.00	2.50	5.75	1.93	5.07	2.38	1/4 x 1.75
2262	4.45	7.46	8.00	2.94	2.625	3.38	1.69	3/8-16	0.69	4.38	6.38	3.19	6.25	1.87	5.63	2.75	1/4 x 2.00
2300	5.28	8.12	8.88	3.25	3.000	4.00	2.00	7/16-14	0.88	4.71	7.00	3.50	6.57	1.87	6.75	3.46	1/4 x 2.25
2325	5.75	8.75	9.38	3.50	3.250	4.00	2.00	7/16-14	0.88	5.02	7.50	3.75	7.00	1.98	7.06	3.51	3/8 x 2.62
2425	6.13	10.25	11.38	4.44	4.250	5.00	2.50	5/8-11	1.00	5.77	8.50	4.25	9.57	3.65	8.12	4.26	1/2 x 3.06
2525	7.19	13.00	14.00	5.12	5.250	5.81	2.91	5/8-11	1.25	7.40	11.00	5.50	10.87	3.48	9.06	4.36	1/2 x 3.50

NEMA Motor C-Face Flange Locations

UNIT	S ¹	T	U	56C/140TC			180TC			210TC		
				RQ	LQ	LM	RQ	LQ1	LM1	RQ	LQ1	LM1
2133	1/8 x 1.44	0.625	0.500	3.21	3.62	6.38	N/A	N/A	N/A	N/A	N/A	N/A
2154	3/16 x 1.00	0.750	0.625	3.72	4.29	6.92	N/A	N/A	N/A	N/A	N/A	N/A
2175	3/16 x 1.50	0.875	0.625	3.75	4.37	7.00	N/A	N/A	N/A	N/A	N/A	N/A
2206	3/16 x 1.50	1.000	0.625	4.15	4.76	7.90	N/A	N/A	N/A	N/A	N/A	N/A
2238	3/16 x 1.75	1.125	0.750	4.18	4.86	8.00	4.89	5.45	N/A	N/A	N/A	N/A
2262	3/16 x 1.75	1.250	0.750	4.94	5.62	8.61	5.42	5.58	9.61	5.58	5.92	9.61
2300	3/16 x 1.75	1.250	0.875	5.31	5.94	8.94	5.78	6.15	9.94	5.94	6.49	9.94
2325	3/16 x 1.75	1.500	0.875	5.58	6.10	9.25	6.10	6.22	10.25	6.25	6.80	10.25
2425	1/4 x 2.88	1.875	1.250	6.15	6.54	N/A	6.42	6.98	13.31	6.42	6.89	13.31
2525	1/4 x 3.00	2.000	1.250	7.03	7.98	N/A	8.02	8.51	14.61	8.02	8.51	14.61

NEMA Motor C-Face Mounting Dimensions

FRAME	AJ	AK	BD	BE	BE1	BF	QUILL	QUILL KEYWAY ²
56C	5.88	4.50	6.50	0.38	N/A	0.41	0.625	3/16 x 3/32
140TC	5.88	4.50	6.50	0.38	N/A	0.41	0.875	3/16 x 3/32
180TC	7.25	8.50	9.00	N/A	.50	0.53	1.125	1/4 x 1/8
210TC	7.25	8.50	9.00	N/A	.50	0.53	1.375	5/16 x 5/32

Notes: 1-Keyway width by length
2-Keyway width by depth